

## Miniature tri-axial IEPE accelerometer



### Features

- Tri-axial measurement
- Miniature cube
- Adhesive or stud mounting
- Hermetic seal
- Annular shear mode
- Wide frequency response
- Shock duration

### Application

- Vibration monitoring
- Shock testing
- Satellite testing
- Modal analysis
- Aircraft testing

### Dynamic

PARAMETERS	VALUE	UNITS
Sensitivity, $\pm 10\%$ , 25°C	50	mV/g
Acceleration range	100	g
Amplitude nonlinearity	1	%
Frequency response (+/- 5%):	3-10,000	Hz
Frequency response (+/- 3dB):	2-15,000	Hz
Resonance frequency	42	kHz
Transverse sensitivity, max	5	% of axial
Temperature response: -55°C	-10	%
Temperature response: +125°C	+10	%

### Electrical

PARAMETERS	VALUE	UNITS
Power requirement:	voltage source	18 - 30
	current regulating diode	2 - 10
Electrical noise, Broadband Spectral(g):	1 Hz to 10 kHz	2
	Output impedance, max	100
	Bias output voltage, 25°C	8 - 12
	Grounding	Case grounded

### Environmental

PARAMETERS	VALUE	UNITS
Temperature range.	-55 to 125	°C
Vibration limit	1,000	g peak
Shock limit	5,000	g peak
Electromagnetic sensitivity, equiv g, max	90	$\mu\text{g/gauss}$

## Environmental

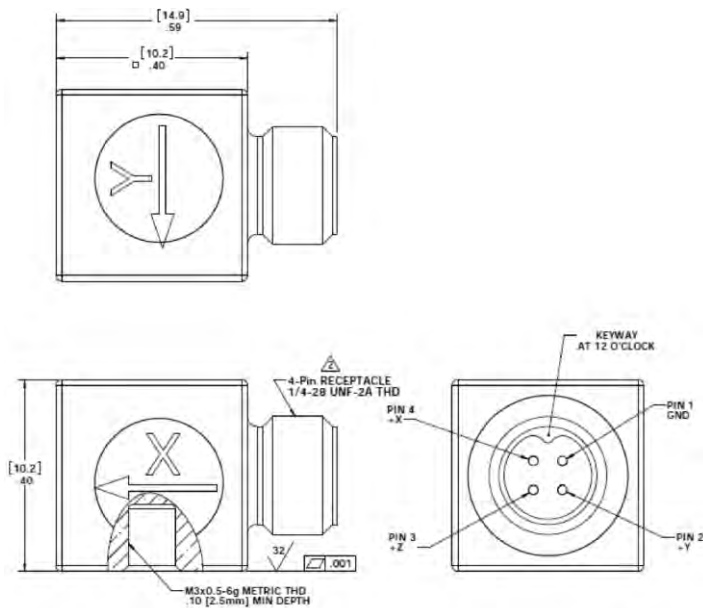
PARAMETERS	VALUE	UNITS
Sealing	Hermetic	/
Base strain sensitivity, max	0.0002	g/ $\mu$ gauss

## Physical

PARAMETERS	VALUE	UNITS
Sensing element design	Ceramic/shear	/
Weight	4.3	grams
Case material	Titanium	/
Output connector	4 pin	/

## Accessories

PARAMETERS	VALUE	UNITS
M3 Screws (Mounting torque 0.7 Nm)	/	/
Calibration certificate	1	set
Mating cable: model 13-X(BNCx3 output) by option		
Note: Frequency response limits spectral and noise values are typical		



FUTURE reserves the right to make changes to any products or technology herein to improve reliability, function or design. FUTURE does not assume any liability arising out of the application or use of any product or circuit described herein; neither does it convey any license under its patent rights nor the rights of others.